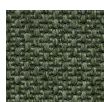
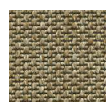


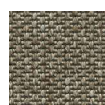
377250



377760



377150



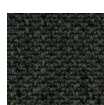
377200



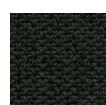
377250



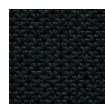
377300



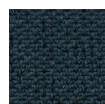
377380



377390



377395



377880



377320



377340



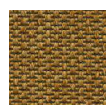
377350



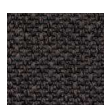
377370



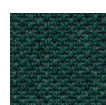
377600



377480



377680



377780

377000 / T377000



Nordic Living

– style and coziness [hygge] combined

The flat-woven bouclé weaving ensures a stylish look, which in Nordic Living has been given a refreshing twist. The carpet's dense loops with their repeated round shapes are reminiscent of the countless apples harvested each fall in local Danish fruit orchards and stacked row upon row in apple crates, before finding their way into lunch boxes, cakes, and dinner dishes as the epitome of Nordic lifestyle and coziness.

Available in 17 beautiful colours. Special colours from +200 m². Felt backing from +200 m².

Technical data




	Standard	 Broadloom w/Textile	 Broadloom w/Felt	 Tiles
Type of manufacture	ISO 2424	Woven	Woven	Woven
Structure	ISO 2424	Loop pile	Loop pile	Loop pile
Pile material	ISO 2424	100% PA 66	100% PA 66	100% PA 66
Dye method		Continuous dyed	Continuous dyed	Continuous dyed
Primary backing	ISO 2424	PET	PET	PET
Secondary backing	ISO 2424	rPET Textile	rPET Felt	TEXtiles®
 Dimensions/Width	ISO 3018	Approx. 400 cm	Approx. 400 cm	50 x 50 cm (5 m ² /box)
Surface pile thickness	ISO 1766	Approx. 2.80 mm	Approx. 2.80 mm	Approx. 2.80 mm
 Total thickness	ISO 1765	Approx. 3.50 mm	Approx 4.50 mm	Approx. 5.00 mm
Total pile mass	ISO 2424	Approx. 415 g/m ²	Approx. 415 g/m ²	Approx. 415 g/m ²
 Total mass	ISO 8543	Approx. 1,750 g/m ²	Approx. 2,150 g/m ²	Approx. 3,100 g/m ²
Stitch rate	ISO 1763	Approx. 168,000 /m ²	Approx. 168,000 /m ²	Approx. 168,000 /m ²
 Antistatic	ISO 6356	≤ 2 kV	≤ 2 kV	≤ 2 kV
 Classification for use	EN 1307	23 Domestic - Intensive use	23 Domestic - Intensive use	23 Domestic - Intensive use
 Classification for use	EN 1307	33 Commercial - Heavy	33 Commercial - Heavy	33 Commercial - Heavy
 Luxury rating class	EN 1307	LC1	LC1	LC1
 Dimensional stability	EN 986	-	-	≤ 0.2 %
 Castor chair suitability	EN 985	Intensive use	Intensive use	Intensive use
 Impact sound reduction	ISO 10140	Approx. ΔL _w 14 dB	Approx. ΔL _w 18 dB	Approx. ΔL _w 20 dB
 Sound absorption	EN ISO 354	Approx. 0.10 α _w	Approx. 0.15 α _w	Approx. 0.20 α _w
 Thermal resistance	ISO 8302	Approx. 0.06 m ² K/W	Approx. 0.09 m ² K/W	Approx. 0.10 m ² K/W
 Fireclass	EN 13501-1	C _{fl} - s1	C _{fl} - s1	B _{fl} - s1

Recommended tile installation

Square



Certifications

	Standard	 Broadloom w/Textile	 Broadloom w/Felt	 Tiles
CE	EN 14041	0809-CPR-19006044-C3	0809-CPR-19006044-C3	0809-CPR-19006044-C7
DOP	EN 14041	1118#19006044-C3	1118#19006044-C3	1118#19006044-C7
UKCA	EN 14041	0086 CPR 780063	0086 CPR 780063	0086 CPR 780067
IACG	EN 16516	Compliant	Compliant	Compliant
M1		Compliant	Compliant	Compliant
GUI		Compliant	Compliant	Compliant
GUT		Compliant	Compliant	Compliant
EPD - GWP A1-A3	ISO 14025 EN 15804+A2	8.3 kg CO ₂ - Eq	8.3 kg CO ₂ - Eq	11.1 kg CO ₂ - Eq
PEF - LCA Scope 3 CO ₂ - Eq according to EU PEF Standard		10.0 kg CO ₂ - Eq	11.0 kg CO ₂ - Eq	13.0 kg CO ₂ - Eq
Reach		Compliant	Compliant	Compliant
BREEAM NOR		Compliant	Compliant	Compliant
Recycled content		100% recycled backing	100% recycled backing	100% recycled backing



As we continuously improve our products and testing procedures, any above declaration is subject to amendments without prior notice.
For the latest technical specifications, installation and maintenance guide visit:

www.fletcocarpets.com